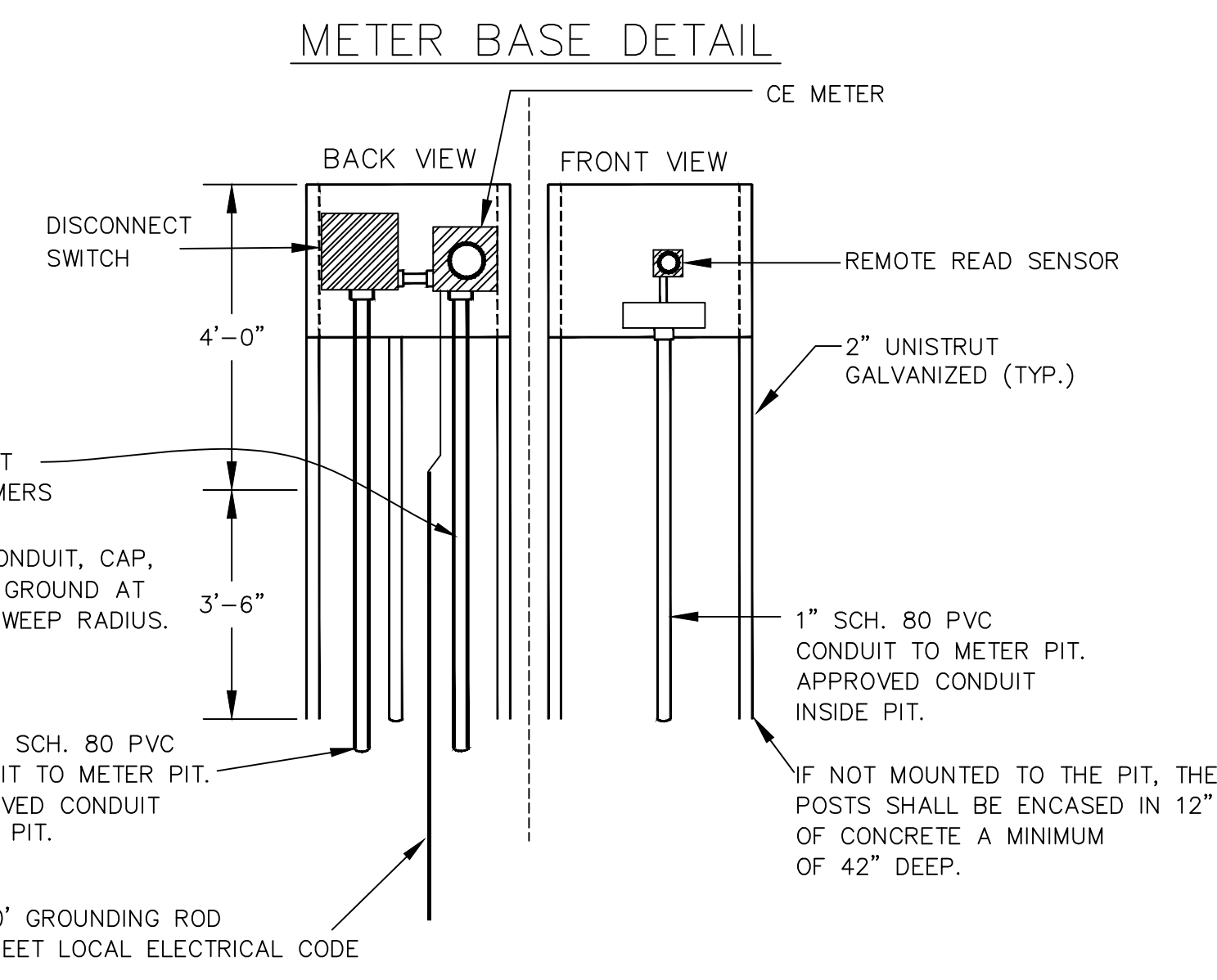


ITEM	QTY	DESCRIPTION (TYP.)
A	2	REDUCER
B	2	TEE
C	3	GATE VALVE
D	2	90° BEND
* E	1	SOLID SLEEVE
F	2	VALMATIC SERIES 500 SWING-FLEX CHECK VALVE
** G	1	INSENSYS SERIES "W" TURBO METER MODEL W3500DR W/ STAINLESS STEEL STRAINER OR GCDC-WWS APPROVED ALTERNATE
	1	INSENSYS TOUCH READ ECRWP REGISTER W/ REMOTE READ
H	2	SAMPLE TAP (2" FORD CORP. STOP & REQ. FITTINGS) OR GCDC-WWS APPROVED ALT.
I	2	WATERPROOF LIGHTING FIXTURE, 100 WATT INCANDESCENT, APPLETON VGAT-1075G
J	2	VAPORITE OR GCDC-WWS APPROVED ALTERNATE
K	2	WEATHERPROOF DUPLEX RECEPTACLE W/ GROUND FAULT PROTECTION
L	1	WEATHERPROOF LIGHT SWITCH
	1	SAMPLE TAP (2" FORD CORP. STOP & REQ. FITTINGS) OR GCDC-WWS APPROVED ALT.

- NOTES:
1. ALL PIPE WORK & FITTINGS INSIDE THE METER PIT SHALL BE FLANGED JOINTED IN ACCORDANCE WITH THE PROJECT SPECIFICATIONS.
 2. SHOP DRAWING SUBMITTALS WILL BE REQUIRED FOR THE METER PIT AND ALL OTHER EQUIPMENT AND MATERIALS INSIDE THE METER PIT. GCDC-WWS SHALL HAVE FINAL APPROVAL OF THE TOTAL PACKAGE OF THE METER PIT.
 3. EXTERIOR WALLS OF THE METER PIT SHALL BE COATED WITH XYPEX WATERPROOFING, INCLUDING THE TOP, IF BURIED.
 4. INTERIOR PIPE SUPPORTS SHALL BE POURED CONCRETE. PIPE SUPPORT DETAIL SHALL BE PROVIDED FOR REVIEW. ADDITIONAL PIPE SUPPORTS MAY BE REQUIRED AS RECOMMENDED BY THE METER SUPPLIER.
 5. PROVIDE 110V-120V A.C. POWER SUPPLY FOR OPERATION OF THE LIGHTS, RECEPTACLES, AND SUMP PUMP.
 6. CONSUMERS ENERGY COMPANY SHALL DO ALL REQUIRED CONSTRUCTION FROM POWER POLE TO METER.
 7. FLOATATION CALCULATIONS ARE REQUIRED TO BE SUBMITTED FOR APPROVAL TO GCDC-WWS FOR THE METER PIT.
 8. THE APPROPRIATE HATCH AND TOP OF PRECAST PIT SHALL MEET HS20 LOADING.
 9. SIZE HATCH FOR LADDER ACCESS.
 10. CONTRACTOR SHALL BE REQUIRED TO SET METER BASE FOR CONSUMERS ENERGY COMPANY.
 11. CONTRACTOR SHALL COORDINATE WITH CONSUMERS ENERGY COMPANY TO OBTAIN AN ADDRESS FOR THE METER PIT LOCATION.
 12. ALL PIPE OUTSIDE METER PIT SHALL BE SET IN STABLE GROUND.
 13. ELECTRICAL CONDUIT SHALL BE SUBMITTED FOR REVIEW AND APPROVAL FOR LOCATION, TYPE OF MATERIAL AND SIZE.
 14. ELECTRICAL CONDUIT SHALL BE PLACED NO LESS THAN 4' ABOVE THE FLOOR.
 15. PROVIDE AND INSTALL ZOELLER MODEL M98 (1/2 HP) SUMP PUMP AND APPURTENANCES PER PROJECT SPECIFICATIONS.
 16. CONTRACTOR SHALL SUPPLY ALL MANUFACTURER'S RECOMMENDED SPARE PARTS AS PER OPERATION AND MAINTENANCE MANUALS.

* ALL SOLID SLEEVES SHALL BE RODDED TO THE NEXT JOINT W/ STAINLESS STEEL RODS, NUTS, ETC.
 ** METER SHALL BE EQUIPPED WITH ECRWP REGISTER THAT READS IN 500 CUBIC FOOT INCREMENTS.



2" RIGID GALVANIZED CONDUIT TO METER BASE FOR CONSUMERS ENERGY ELECTRICAL SERVICE. PROVIDE PULL LINE INSIDE CONDUIT, CAP, & TERMINATE 2" MIN. BELOW GROUND AT THE END OF THE 90° LONG SWEEP RADIUS.

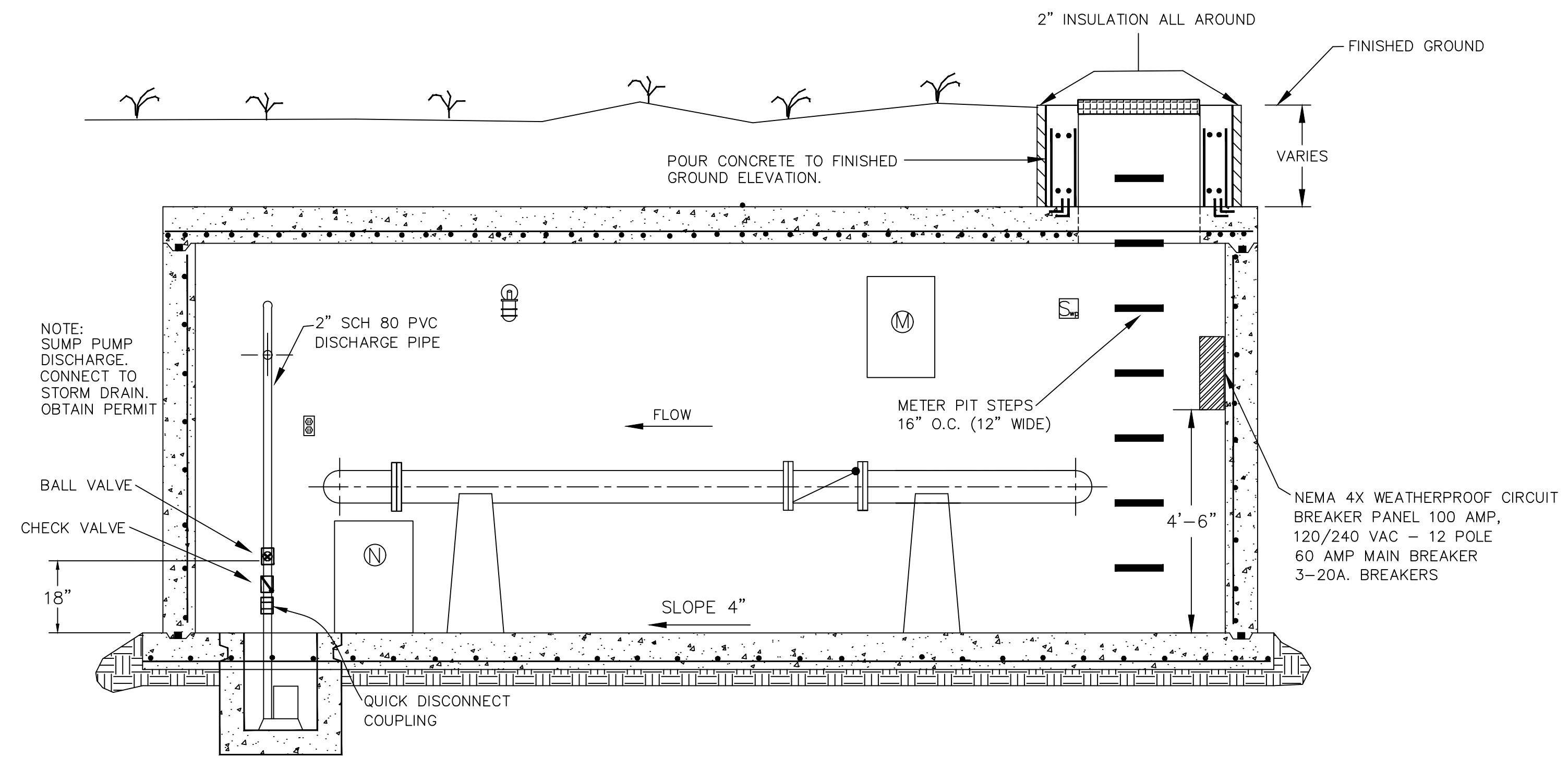
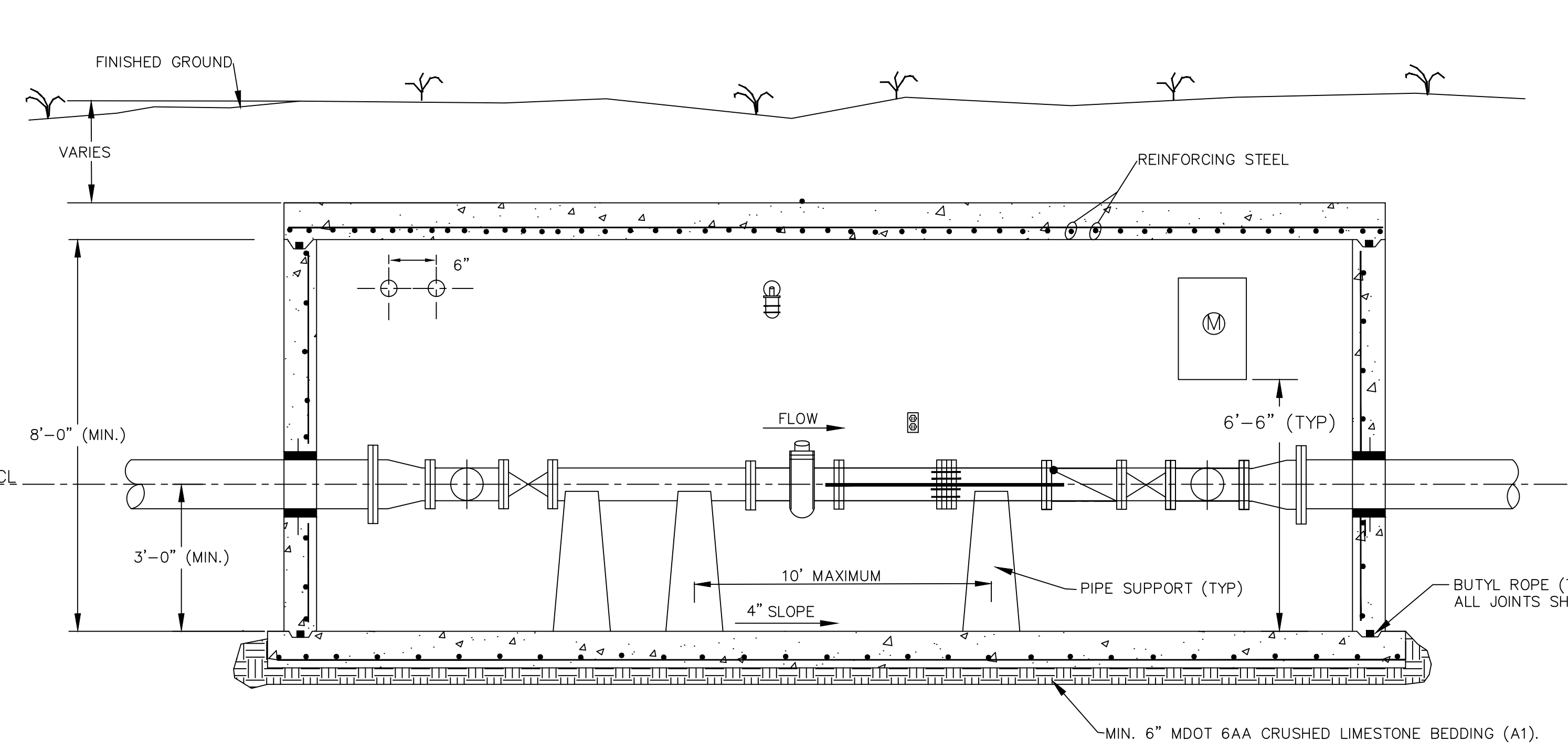
1 1/2" SCH. 80 PVC CONDUIT TO METER PIT. APPROVED CONDUIT INSIDE PIT.

3/4"x10' GROUNDING ROD MUST MEET LOCAL ELECTRICAL CODE

NOTE: ALLOW, PER MANUFACTURER'S SPECIFICATIONS, THE REQUIRED STRAIGHT LINE PIPE NEEDED, WITHOUT BENDS, FITTINGS, TEES, ETC. FOR THE METER.

NOTE: NUMBER & LOCATION OF PIPE SUPPORTS SHALL BE APPROVED BY GCDC-WWS.

CHECKER PLATE ALUMINUM ACCESS HATCH (BILCO TYPE J OR APPROVED ALTERNATE). HASP TO RECEIVE PADLOCK. NOTE: INSIDE EDGE OF HATCH ENTRANCE SHALL BE MOUNTED FLUSH WITH INSIDE EDGE OF METER PIT CONCRETE CURB WALL.



SECTION 1/A

SECTION 1/B

FOR METERS LARGER THAN 4"

NO.	DATE	DESCRIPTION
1	2020	EIGHTH EDITION

DIVISION OF WATER & WASTE SERVICES

STANDARD METER PIT DETAIL

STANDARD DETAILS
 For the Construction of Sanitary Sewers & Watermain in Genesee County

